

Sensing element OEM

Sensors

KEY FEATURES

- Designed for measurement of pressure in liquid and gaseous media, including special gases
- Employs thin-film strain-gauge measuring technology for high sensitivity and robust performance
- High proof and burst pressures
- Depending on application, the functional layer can be connected with either soldered or wire-bonded contacts
- Can be supplied either welded onto stainless steel adapter/support parts or ready for welding by the customer
- Equipped with temperature measurement function.

TECHNICAL DATA

- Measuring range: 25 ... 3000 bar
- Hysteresis: <0.1 % FS
- TC Zero offset: <0.02 % FS/K
- TC span: <0.01 % FS/K

Kaufbeurer Mikrosysteme Wiedemann GmbH

Am Bärenwald 2
87600 Kaufbeuren

+49 8341 9505-0
info@kmw-mikrosysteme.de
www.kmw-ms.com

TECHNICAL DATA

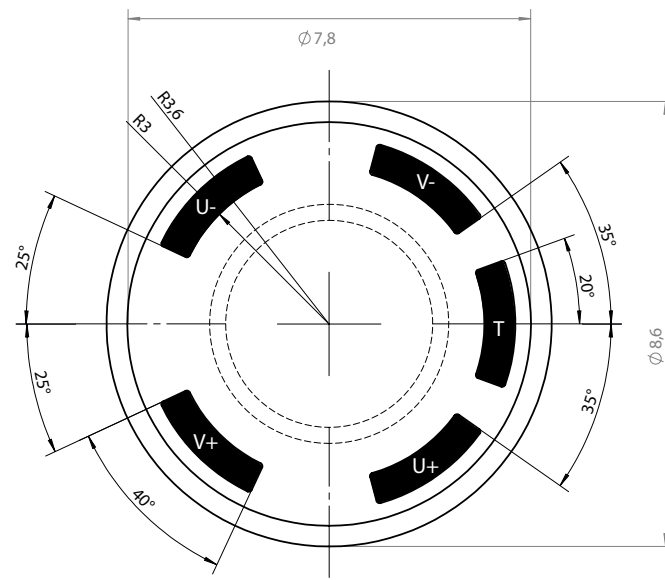
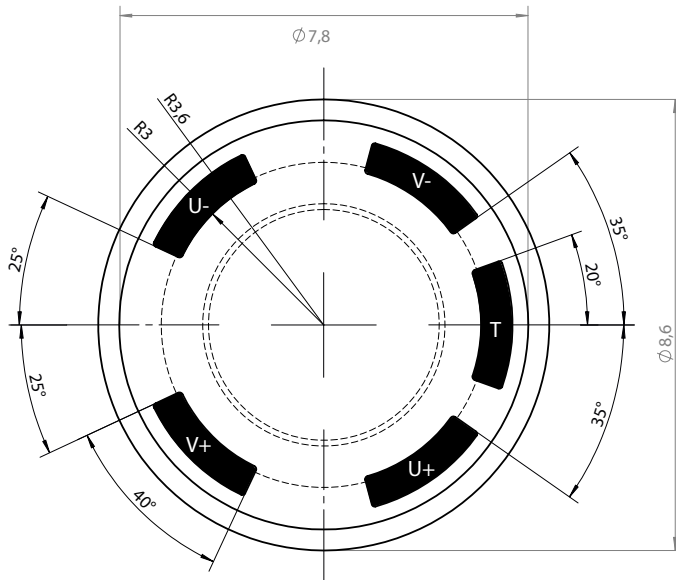
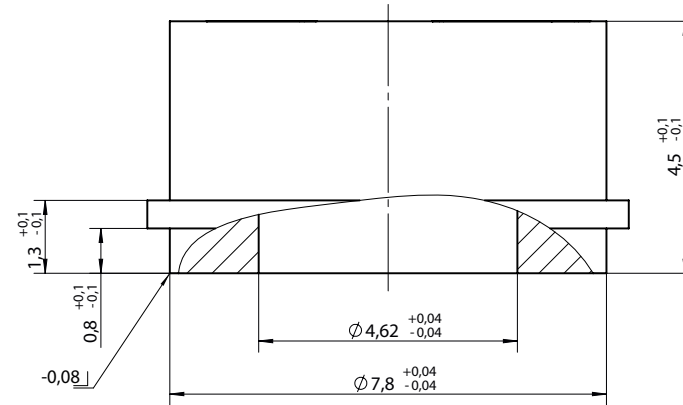
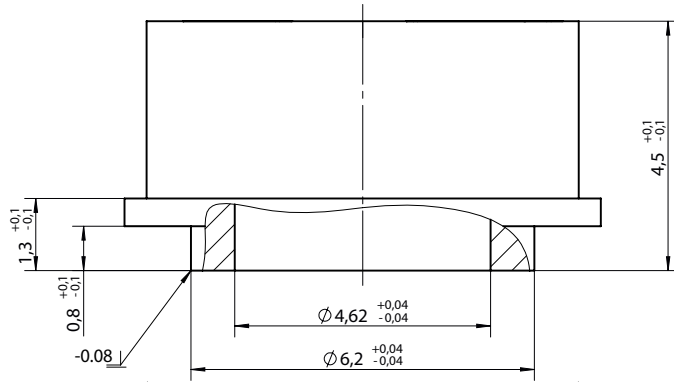
	TB	TE	TG	TL	TP	TQ	TV*	TX*
Measuring range	25 bar	60 bar	160 bar	400 bar	700 bar	800 bar	2000 bar	3000 bar
Overload referred to DIN EN 60770-1	40 bar	100 bar	250 bar	600 bar	1000 bar	1000 bar	2200 bar	3200 bar
Burst pressure referred to DIN EN 60770-1	60 bar	150 bar	400 bar	800 bar	1200 bar	1200 bar	2400 bar	3400 bar
Min. lifetime	> 10 ⁸ cycles	> 10 ⁸ cycles	> 10 ⁸ cycles	> 10 ⁸ cycles	on request	> 10 ⁸ cycles	on request	on request
Linearity (typical)	< 0.5 % FS	< 0.2 % FS	< 0.2 % FS	< 0.2 % FS	< 0.2 % FS	< 0.2 % FS	< 0.2 % FS	< 0.2 % FS
Hysteresis (typical)	< 0.1 % FS							
TC zero offset (typical)	< 0.02 % FS/K							
TC span (typical)	< 0.01 % FS/K							
Long term stability (typical)	< 0.2 % FS p. a. (under reference conditions)							
Operating temperature	-40 ... +200 °C / -40 ... 392 °F							
Zero offset	0 ± 1,2 mV/V							
Span	5,5 mV/V ± 20 %							
Bridge resistance	2 ... 9 kΩ							
Insulation	500 VDC							
Max. supply voltage	15 VDC							
Material	17-4 PH							

* For common-rail fuel injection applications; drawings on request

TECHNICAL DRAWING

≤ 700 bar

≥ 800 bar



All dimensions in millimeters if not otherwise declared